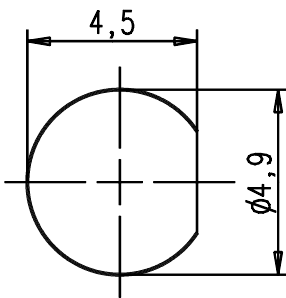
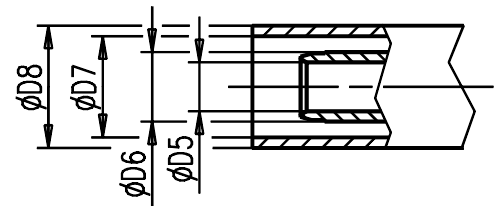
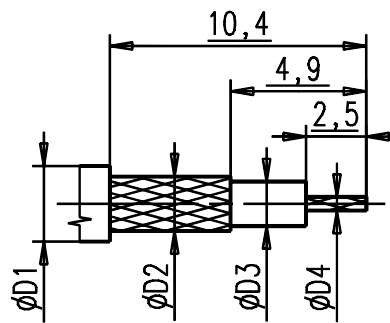


1:1

Montagedurchbruch
Panel cut-out



Kabelzuschnitt
Stripping dimension



Fuer Kabel /
For cable

Gr.	Type Typ	ØD1 max.	ØD2 max.	ØD3 max.	ØD4 max.	ØD5	ØD6	ØD7	ØD8	Crimp Aussen/out	Crimp Innen/in	Crimp tool
1	RG 178 BU;RG 196 AU;	2,10	1,30	0,90	0,30	1,15	1,70	2,25	3,10	2,67	0,70	AGK-2409
2	RG 174 BU;RG 316 U;	2,80	2,20	1,58	0,54	1,70	2,30	3,00	4,00	3,25	0,84	AGK-3436
3												
4												
5	RG 316 U-d;	3,10	2,50	1,55	0,54	1,70	2,30	3,30	4,00	3,25	0,84	AGK-3436

IMS CONNECTOR
SYSTEMS

general tolerance
ISO 2768
mH

scale: 5:1

Assembly instruction: M43
Stripping dimension:

date name
03.11.87 Baermann

Einbaustecker

353/03	e	Crimptool def.	27.08.03	Mayer	Norm
105/03	d	Ø1,67 --> Ø1,58	14.03.03	Mayer	31096
658/01	c	KG1 Crimpung 2,67	13.11.01	Mayer	
	b	Kabelzuschnitt	07.10.93	I.S.	
	a	L=18,7-->20,0	23.09.88	Grade	
nr.	rev.	alteration	date	name	



362.11.1313.2''

Rev.
e